



40° 65m Radius Stinger

Cecon Contracting's large modular stinger provides pipe support from the deck to the natural catenary during lay. Designed for rigid pipe up to 12" (water depth and wall thickness dependent) in S lay configuration, this modular stinger is easily mounted on board a vessel, and pivots out of the water during transit. Pairs well with Cecon Contracting's 36t tensioner.

Stinger Specifications

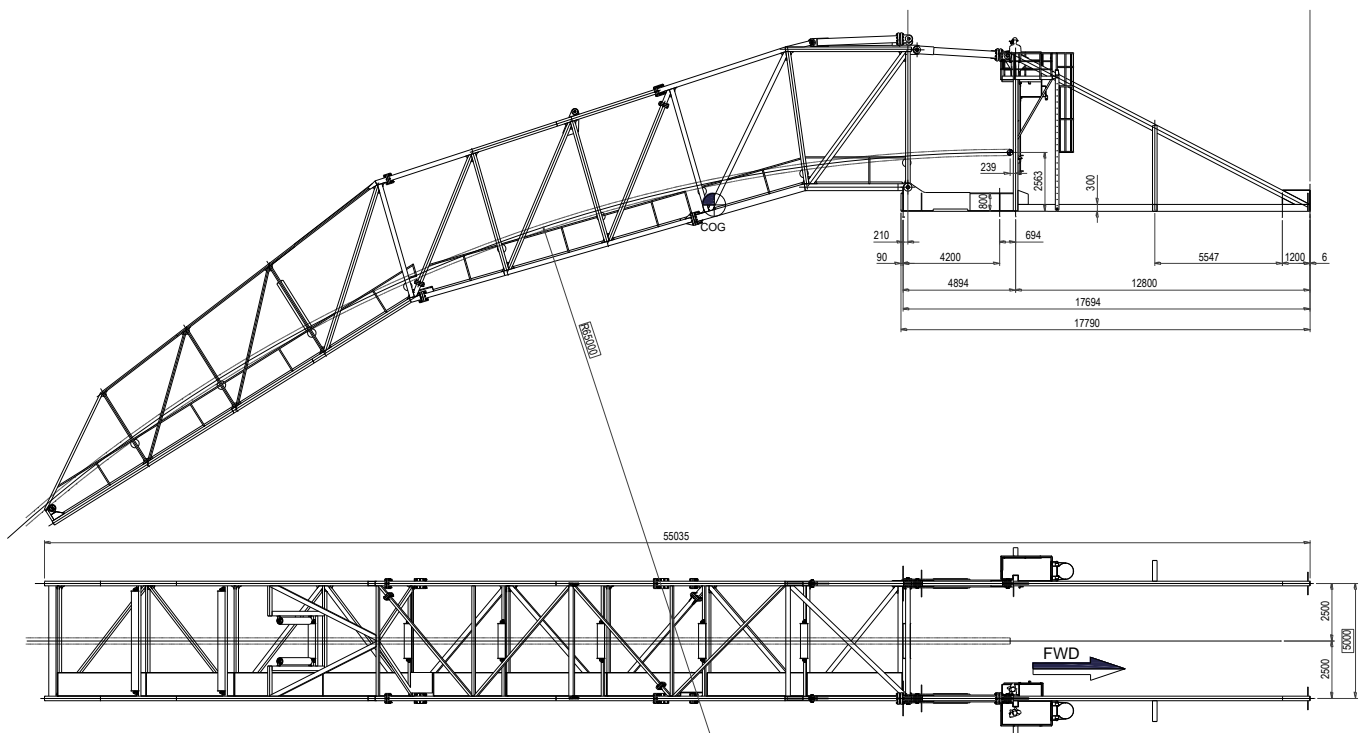
Radius65m
 Angle at Departure 40 degrees
 Pipe Size <12"
 Distance Between Rollers 5.0m

Total Mass.....66.7 tonnes

Design Criteria

Design CodeDNV OS-F101
 Design Wind Loading41m/s

General Arrangement



- All specifications contained herein are for information purposes only -

Updated 15 May, 2018